

CERTIFICATE OF LOCATION OF GOVERNMENT CORNER

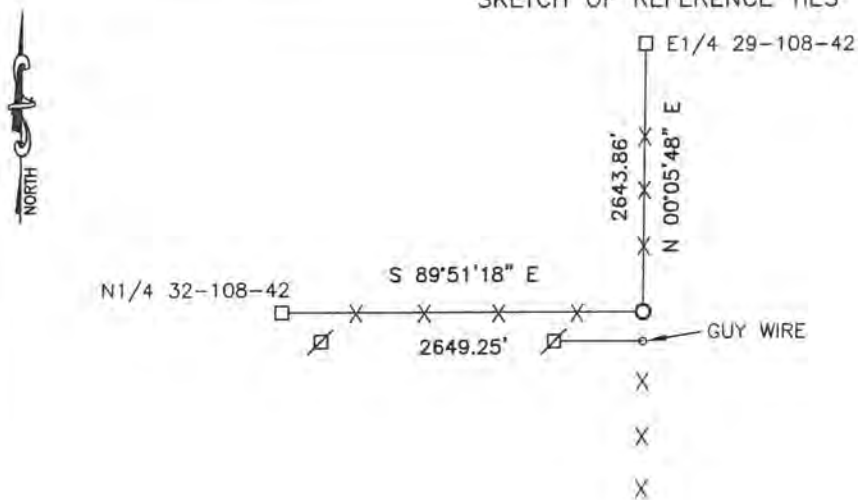
NORTHEAST Corner of Section 32, Township 108, Range 42, 5TH P.M.

STATE OF MINNESOTA, County of MURRAY

At the corner location shown on the sketch:

- On _____ found a _____
- left monument as found, lowered monument, removed monument (explain)
- On 6/27/14 placed a 5/8" iron w/seal #43844

SKETCH OF REFERENCE TIES



Minnesota State Plane Coordinate
 System Murray County Datum
 NAD83 (1996)
 N: 200622.898
 E: 464037.026

Guy wire is 1'± South of iron.

Statement of evidence relative to this corner location is on back of page.

I hereby certify that this document and the data contained herein was prepared by me or under my direct supervision

[Signature] 1/14/15
SIGNATURE DATE

Registration No. 43844

- Land Surveyor, Professional Engineer
- County Surveyor, County Engineer

OFFICE OF THE COUNTY RECORDER
 County of _____

I hereby certify that this document was filed in the Co. Recorders office at _____ .M on the _____ day of FEB 20 2015 A.D. 20 _____

County Recorder Evelyn C. Larson

By _____, Deputy

DOCUMENT NO. _____

Statement of Evidence

In 1861, L.G.W. Fletcher did the original subdivision of the township.

On June 27, 2014, Bueltel-Moseng Land Surveying set a $\frac{5}{8}$ " iron with seal #43844 at the fence intersection. It is north $1' \pm$ of guy wire.